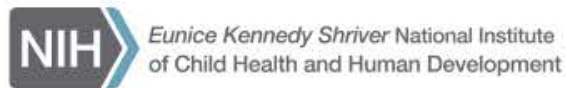


# NICHD Strategic Plan Responding to Stakeholder Feedback

Diana W. Bianchi  
Director, NICHD  
June 11, 2019



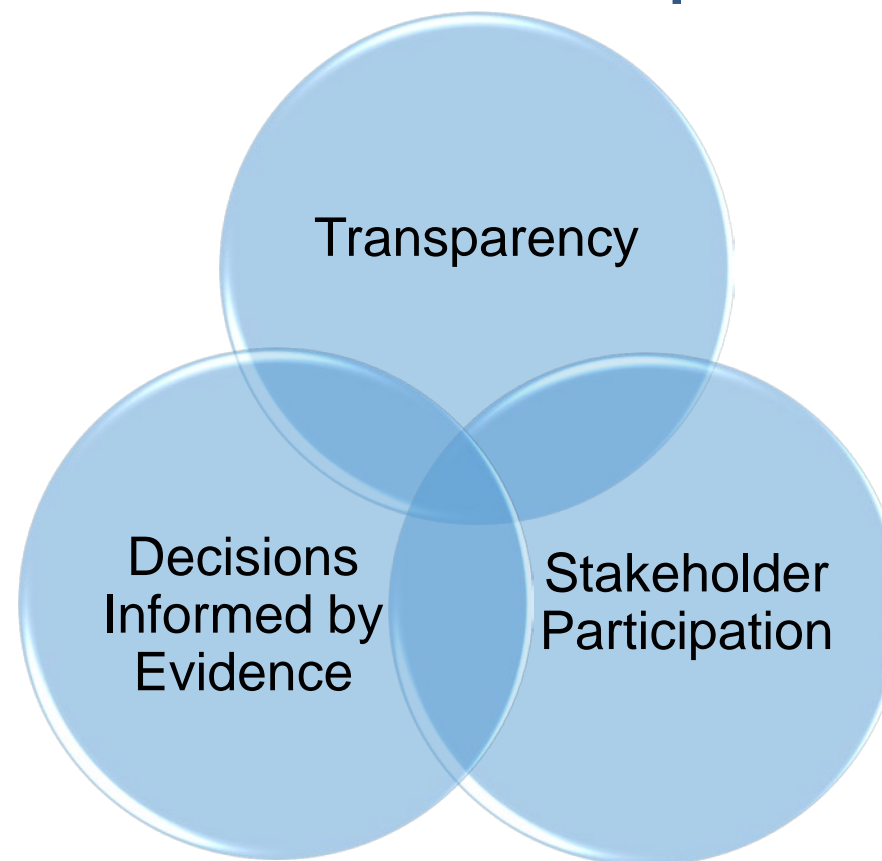


## Goals

- Identify where NICHD lead (priorities)
- Identify where NICHD partner and collaborate
- Inform future investments in research, training, and infrastructure



## Core Principles

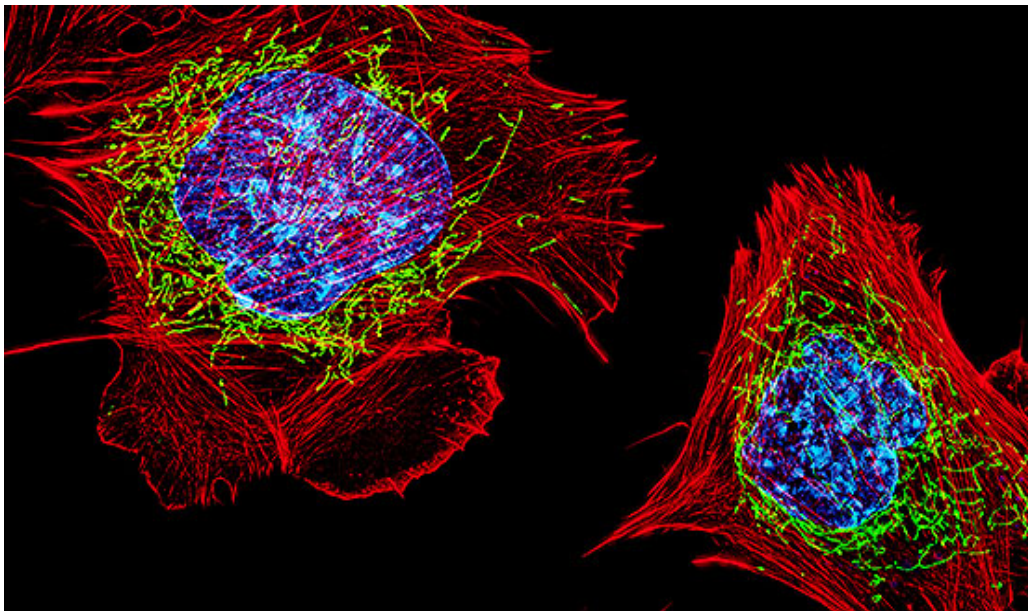




# Request for Information (NOT-HD-18-031)

- 924 total comments
- Many comments touched on multiple themes/scientific areas
- RFI Summary report is now available:  
<https://www.nichd.nih.gov/about/org/strategicplan>

# Strategic Plan Themes Proposed in the RFI



1. Understanding Early Human Development
2. Setting the Foundation for a Healthy Pregnancy and Lifelong Well-being
3. Promoting Gynecologic, Endocrinological, and Reproductive Health
4. Identifying Key Time Periods to Optimize Interventions
5. Ensuring Health During the Transition from Adolescence to Adulthood
6. Ensuring Safe and Effective Therapeutics and Devices

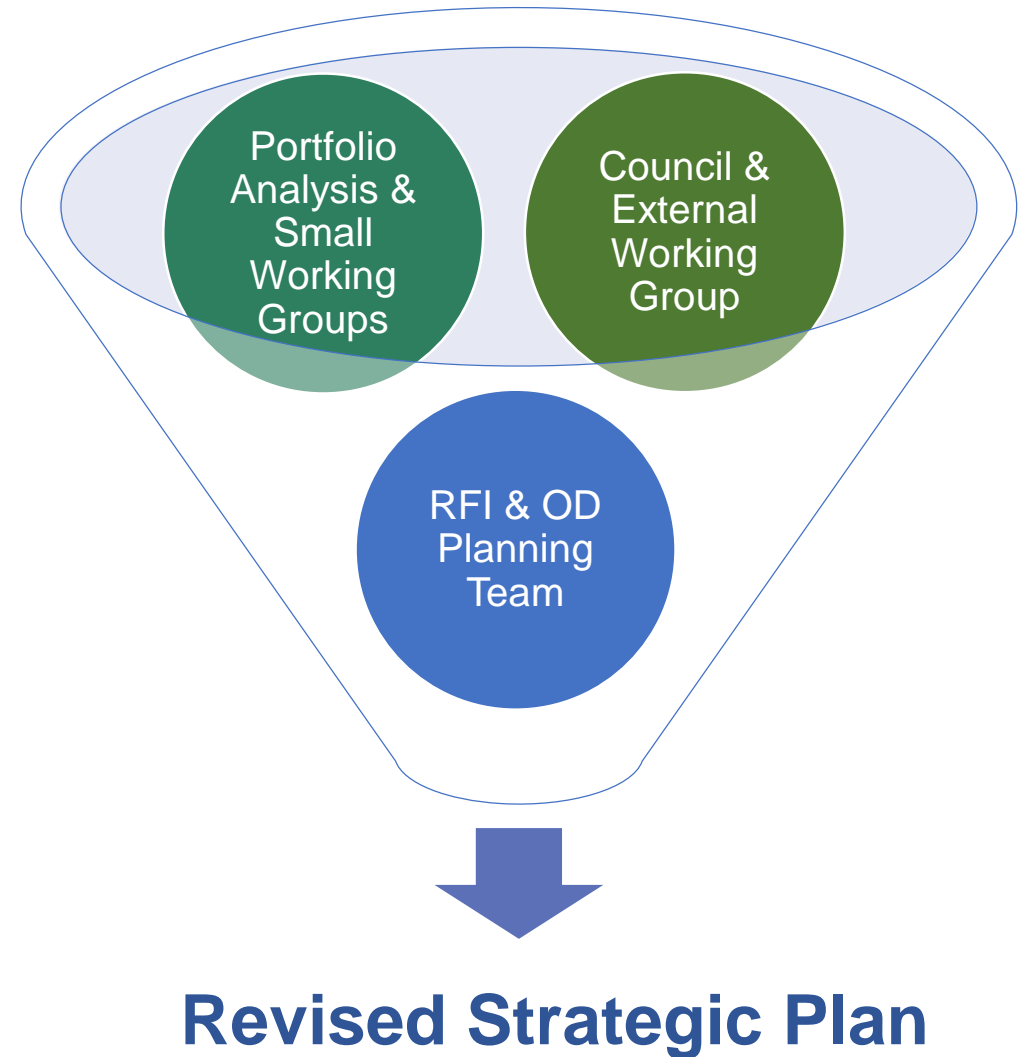
**Under Construction**

**Draft Research Themes**



# Where We Are Thanks to Stakeholder Participation

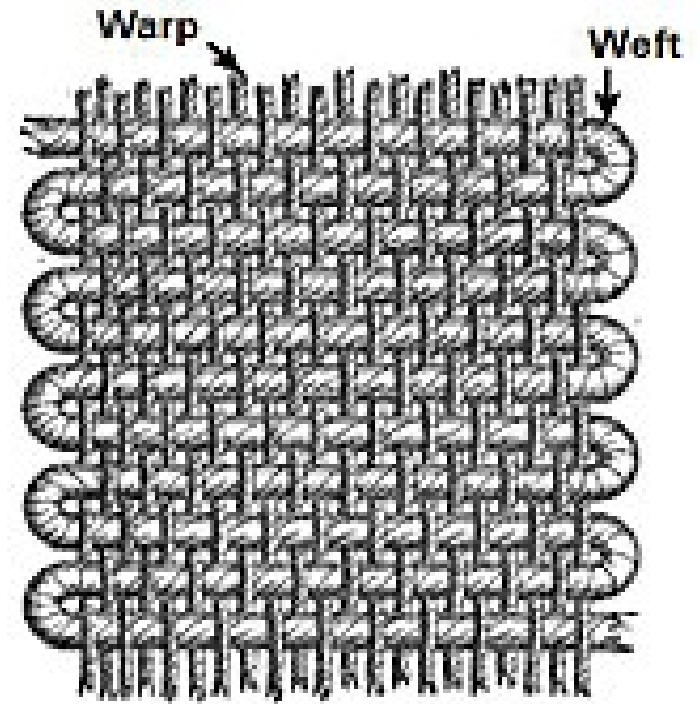
- Revising Strategic Plan themes and priorities
- Revisions will reflect synthesized input from **many** sources
- Final version shared in September 2019
- **THANK YOU** for all of your input!





# Cross-Cutting Themes

- Cross-cutting themes relevant to all research themes and priorities
  - Global health
  - Health disparities
  - Prevention
  - Nutrition
  - Infectious disease
- Final strategic plan document will include an introductory section to explain broad applicability of these cross-cutting themes
  - Cross-cutting themes may not be explicitly stated in each research theme or priority



(This work is licensed under the [Creative Commons Attribution-ShareAlike 3.0 License](#).)



# Evolution of the Strategic Plan in Response to Stakeholder Feedback





# Developmental Biology and Animal Models

- Increased emphasis on a variety of model systems to understand typical developmental processes
- Expanded from single cell focus and encompassed broader view of genes and gene regulatory networks







# Neurodevelopment and Intellectual & Developmental Disabilities

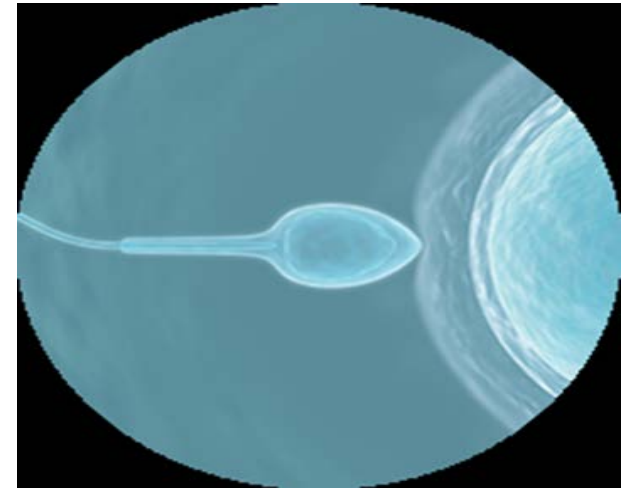
- Included focus on typical and atypical neurodevelopment from the earliest developmental stages
- Incorporated individuals with intellectual and developmental disabilities throughout the plan, from early human development to transition to adult care and inclusion in development and testing of therapeutics and devices





# Reproductive Health

- Included clearer emphasis on reproductive health as a “window to future health”
- Added investigation of developmental processes that result in abnormalities of the female and male reproductive tracts
- Clarified the need for better characterization and definition of gynecologic and andrologic conditions
- Retained emphasis on fertility and infertility, with a specific role for methods to manage fertility





# Healthy Pregnancies

- Incorporated pre-pregnancy factors
- Re-emphasized the priority on placental biology and placental clinical research
- Inclusion of the “fourth trimester”
- Ensured an emphasis on research to address SUID/SIDS and infant mortality







# Child Development

- Articulated continued support for studying typical and atypical child development
  - Included social and environmental factors in development of the child and adolescent
  - Life stage transitions emphasized for individuals with intellectual, developmental, and physical disabilities
- Provided a stronger emphasis on the impact of and treatments for the exposure to violence, stress, and trauma





# Adolescent Development

- Clarified areas of emphasis
  - Specific concentration on a better understanding of puberty
  - Incorporated transition of adolescents to the adult health care system, especially those with intellectual, developmental, and physical disabilities and those with chronic conditions





# Safe and Effective Therapeutics and Devices

- Will continue to focus on development and validation of drugs and devices that affect NICHD's populations
- Conclusions from the federal Task Force on Research Specific to Pregnant Women and Lactating Women (PRGLAC) will influence our research agenda
- Integrated use of clinical trial and use of “real world” data, such as electronic health records and research registries to measure exposures/responses to therapeutics and devices

